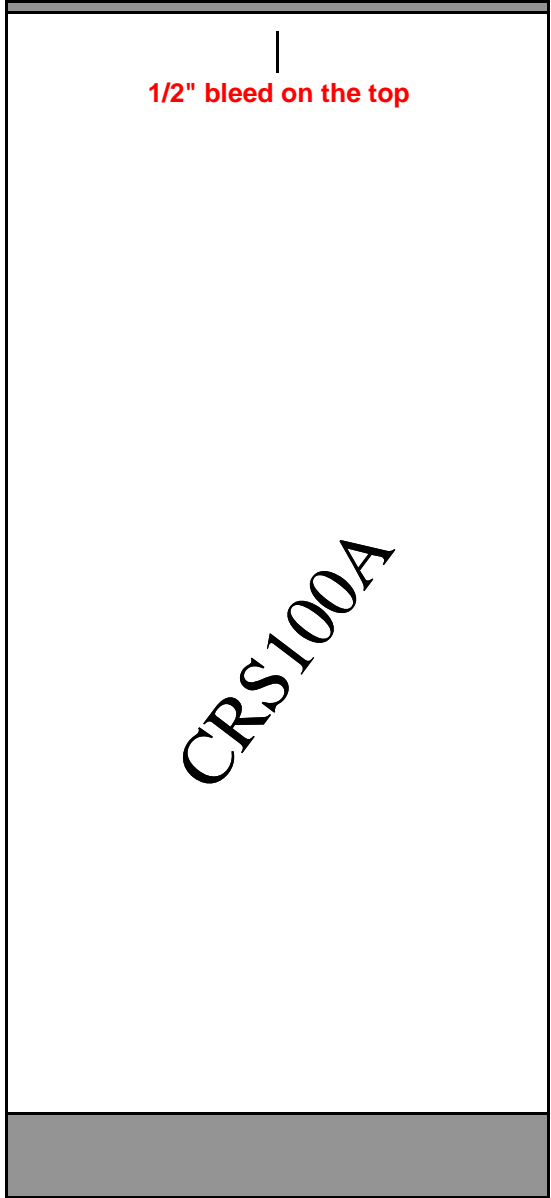


33" Wide

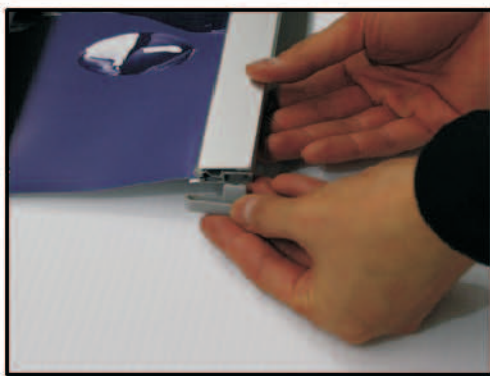
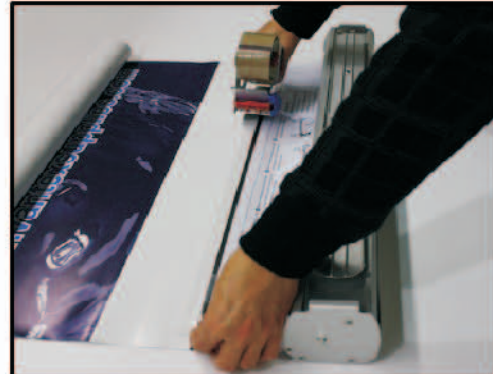
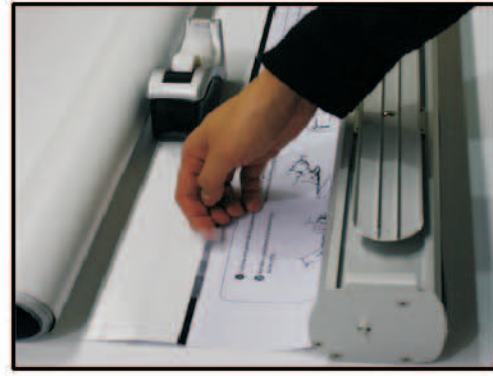
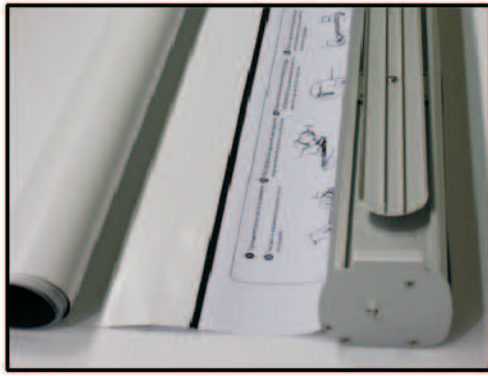
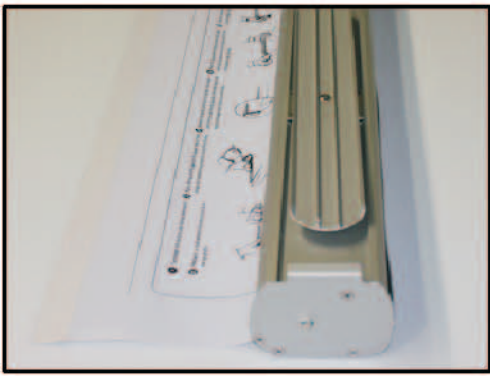


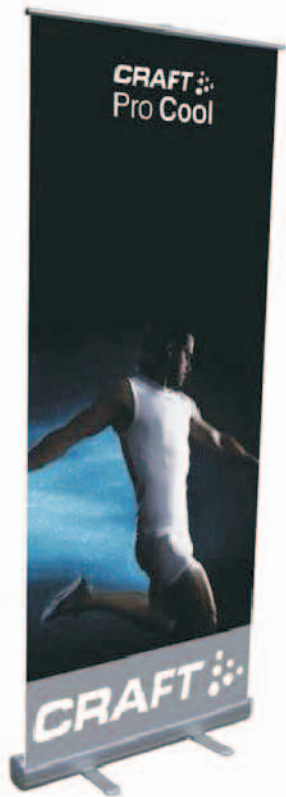
1/2" bleed on the top

77" High

CRS100A

12" extra material at the bottom





CRS100 series

Product Features:

- Complete aluminum construction
- Fixed height pole
- Compact base unit
- Snap aluminum top bar
- Heavy duty end caps
- Carrying bag
- Easy Setup



- * High quality stand at an affordable price
- * Complete aluminum construction
- * Stylish snap aluminum top bar allows easy graphic attachment
- * Comes with a durable carrying bag
- * Available in 33" x 79 and 48" x 79"

